



Pontifical University
St Patrick's College
Maynooth

Undergraduate Prospectus 2017



INTRODUCTION

St Patrick's College, Maynooth opened its doors as an educational institution in 1795 and, over the intervening two centuries, it has established for itself an impressive reputation for scholarship and learning.

The Pontifical University has close links with Maynooth University (the National University of Ireland, Maynooth). The two universities share the same campus and co-operate in a number of important academic programmes.

The campus is also the seat of the National Seminary.

The town of Maynooth is situated in north County Kildare. It is close to the borders of Counties Dublin and Meath. It is 15 miles/25 km. west of Dublin city centre, just off the N4/M4, the main Dublin to Sligo/Galway road.

Maynooth is approximately 7 miles/12 km from the N3 /M3 - the main Dublin/Cavan road, and is approximately 13 miles/22km from the N7/M7 - the main Dublin to Limerick/Cork road.

Today, Maynooth preserves much of its rural ambience and provides easy access to large tracts of peaceful countryside. At the same time, it is within easy reach of Dublin and is close to the high-technology industrial parks on the western edge of the city. It is home to a vibrant local community and offers students and others abundant opportunities to enjoy a busy and varied social life.

The south campus itself is beautiful with its elegant neo-gothic and Georgian architecture, while on the north campus the buildings are more modern and contemporary. The campus is also teeming with wild life; here you will find grey squirrels, rabbits and hares in abundance. On occasion, unusual birds such as hawks and kestrels have been observed. It is hard to imagine that this haven of tranquillity is so close to the capital of Ireland!





General Information	4
Student Testimonials	6
Application Information	8
Baccalaureate in Theology (B.Th.)	10
Baccalaureate in Theology & Arts (B.A.Th)	12
Private Buses & Additional Services	14



General INFORMATION



FEES

Baccalaureate in Theology & Arts (B.A.Th.)

Baccalaureate in Theology (B.Th.)

Both programmes qualify for the Free Fees initiative and the Higher Education Grants Scheme.

CUT OFF POINTS (First Round)

	2006	2007	2008	2009	2010	2011	2012	2013	2014	2015	2016
Baccalaureate in Theology & Arts (B.A.Th.)	300	300	315	315	335	325	315	310	300	300	300
Baccalaureate in Theology	255	260	305	300	310	320	315	325	325	425	360

Semesterisation and Modularisation

Semesterisation allows students to regulate their studies by completing the first half of their examinations in January and the second half in May. Modular systems operate on the basis of credits and have become the international academic standard. They make for better access to a broader range of studies and greater transparency in the presentation of an undergraduate syllabus.

Student Assistance Fund (SAF)

The Student Assistance/Access Fund is jointly sponsored by the European Social Fund and the Irish Government. It is available for students who require additional financial support to enable them to benefit fully from their third level studies. Registered students do not necessarily need to be grant holders to apply for funding. It simply offers a limited amount of financial support to students who experience financial difficulties related to the costs of their studies. The funding is available to all full-time registered students of the Pontifical University.

SERVICES

Student Health Centre

The Student Health Centre is located in the Student Services Centre on the north campus. It is a confidential service and all consultations are free. However, there are charges for some services. It is staffed by a secretary, two nurses and a doctor. For more information on services available please check the website www.maynoothuniversity.ie/studenthealthcentre

DARE (Disability Access Route to Education) and HEAR (Higher Education Access Route)

The Pontifical University, St Patrick's College, Maynooth has close links with Maynooth University (the National University of Ireland, Maynooth). The two universities share the same campus and facilities. Maynooth University's Access Office caters for students of both Universities.

1. The Disability Access Route to Education (DARE) is a third level alternative admissions scheme for school-leavers whose disabilities have had a negative impact on their second level education. Before submitting a DARE application you should read the DARE Application Guide & Workbook and discuss this with your parents, guardians or guidance counsellor. There are other admissions routes for mature and FETAC applicants; further information is available in this prospectus and on HEI websites.

Applicants applying for DARE must:

1. Be under the age of 23 as of 1st January 2017.
2. Apply to CAO by 5:15pm on 1st February 2017.
3. No later than 5:15pm on 1st March 2017, disclose your disability and/or specific learning difficulty in your CAO application and fully and correctly complete Section A of the Supplementary Information Form (SIF).

If you wish to be considered for the DARE scheme you must answer yes to question 1 on Section A of the fully completed SIF by 5:15pm on 1st March 2017.

4. Download Section B of the SIF (Educational Impact Statement), have it completed by your school and returned to CAO to arrive by 5:15pm on 1st April 2017.
5. Download Section C of the SIF (Evidence of Disability), have it completed by the appropriate medical professional (only if you do not already have a report verifying your

disability) and returned to CAO to arrive by 5:15pm on 1st April 2017. In place of Section C, applicants with a specific learning difficulty or dyspraxia are asked to provide a full psycho-educational assessment completed by an appropriately qualified psychologist. In addition, applicants with dyspraxia must provide documentation from an occupational therapist, neurologist or physiotherapist.

NOTES: DARE has specific requirements for Section C (Evidence of Disability) in relation to the Medical Consultant/Specialist who must verify your disability, the age limit on reports and the documentation required. For further information on DARE see www.accesscollege.ie

CONDITION OF A DARE OFFER

Applicants who receive a DARE offer must register with the Disability Office and agree on a schedule of meetings with the service. Details of post admission supports for DARE entrants can be found on <https://www.maynoothuniversity.ie/access-office>

2. HEAR (Higher Education Access Route).

The Higher Education Access Route (HEAR) is a college and university scheme which offers places on reduced points and extra college support to school leavers from socio-economically disadvantaged backgrounds who are resident in the Republic of Ireland. HEAR has been established by a number of Higher Education Institutions based on clear evidence that socio-economic disadvantage has a negative impact on educational achievement at school and progression to higher education. School leavers who provide satisfactory evidence relating to their socio-economic circumstances may compete for a quota of places allocated to applicants on a reduced points basis. As the minimum entry and subject requirements may differ between colleges and courses, applicants should check the requirements of each preference listed on your CAO form.

WHO SHOULD APPLY TO HEAR?

School leavers from socio-economically disadvantaged backgrounds who are under the age of 23 as of 1 January 2017 and who are resident in the Republic of Ireland may apply to HEAR. Mature and FETAC applicants have different admission routes and you can get further information on these routes from our website: www.maynoothcollege.ie

HOW TO APPLY TO HEAR

1. Apply online to CAO by 17:15 on 1 February 2017.
2. No later than 17:15 on 1 March 2017, you must indicate in your CAO application that you wish to apply for the HEAR scheme and you must fully and correctly complete all elements of the HEAR form (the HEAR form is a part of your CAO application).
3. Submit evidence in support of your application to arrive at CAO no later than 17:15 on 1 April 2017.

HEAR applications can only be made online at www.cao.ie. More information on HEAR is available from your school Guidance Counsellor and at www.accesscollege.ie

CONDITION OF A HEAR OFFER

Applicants who receive a HEAR offer must attend an orientation programme before the first semester. Applicants who accept places in the Pontifical University through HEAR are offered a variety of academic, personal and social supports while studying at third level. Details of post-admission supports for HEAR entrants can also be found on: www.accesscollege.ie and www.maynoothuniversity.ie/access-office

MORE INFORMATION ON DARE and HEAR

More Information on DARE and HEAR is available from your School Guidance Counsellor or from the Maynooth University Access/Disability Office. Information can also be found on: www.accesscollege.ie
www.cao.ie
www.maynoothuniversity.ie/access-office
www.maynoothcollege.ie

Sports and Recreation

The numerous sports clubs, together with easy access to excellent on-campus facilities, provide quality opportunities for students to get involved in social, cultural and sporting activities.

FACILITIES:

Indoor: include a two sports halls, fitness centre, free weights room, physical therapy room, racquet-ball court and snooker room. The sports halls provide a venue for most of the indoor clubs practice and competitions, along with aerobics and fitness sessions.

Outdoor: There are five playing fields on the south campus. On the north campus there are three high-quality sand-based turf playing fields, facilitating inter-varsity home games in Gaelic football, hurling, soccer, camogie, ladies Gaelic football and rugby. To facilitate club training sessions and internal competitions, there is a FIFA regulation size "third generation" floodlit synthetic pitch.

Sports Programs: Inter-mural and inter-varsity training, practice and competition is provided by over thirty sports clubs active on campus. The clubs are mostly student-run, but several are assisted by professional sports development officers. Facility management and fitness programs are provided by the Sports Department. The Fitness Centre has a reception desk which is staffed during all open hours.

The University Library

The Library is a key resource for students. A team of dedicated staff provide all students with a high quality service in a friendly and student-centred environment. A major new extension offers space for eight different learning styles, from the collaborative to totally silent spaces. A library orientation programme followed by a comprehensive ongoing programme of training in using both print and electronic resources, ensures students gain the maximum from their university library. Staff are always on hand to deal with any queries or problems students may have.

Both print (over 400,000) and eBooks (almost 400,000) are available. The eBook collection and almost 50,000 journals can be accessed by registered students via the web from anywhere in the world. Kindle readers are available to borrow and PCs and laptops for library use are available throughout the library. More information about the library can be found at www.maynoothuniversity.ie/library

IT Services

Students are provided with a range of IT services including e-learning, e-mail, file storage and access to library journals. Each student is supplied with a username and password which grants access to these services, many of which can be accessed both on and off campus. There is an extensive wireless (Wifi) network in place throughout the campus which supports students using their own wireless devices to access the internet and college services. Through IT Services, Maynooth University is part of the eduroam wireless community and students can connect using their login credentials at any site worldwide where this service is available. Students have access to the Public Access Computer Rooms (PACR's) throughout the campus which contain PCs that have internet access, printing and a range of software including office applications. Computing Assistants are on-hand in the PACRs to assist with problems and queries. Please see our website for more information:

www.maynoothuniversity.ie/it-service

Student Accommodation

The Residence Office offers a comprehensive service to students of both the Pontifical University and Maynooth University. Accommodation is available in University Apartments, hostels, lodgings and private rented houses. To apply for campus accommodation all you need to do is go to <https://www.maynoothuniversity.ie/accommodation> to fill out an online application form. There you can also find out all the information about living in Maynooth and campus housing.

Accommodation Office, Maynooth University.

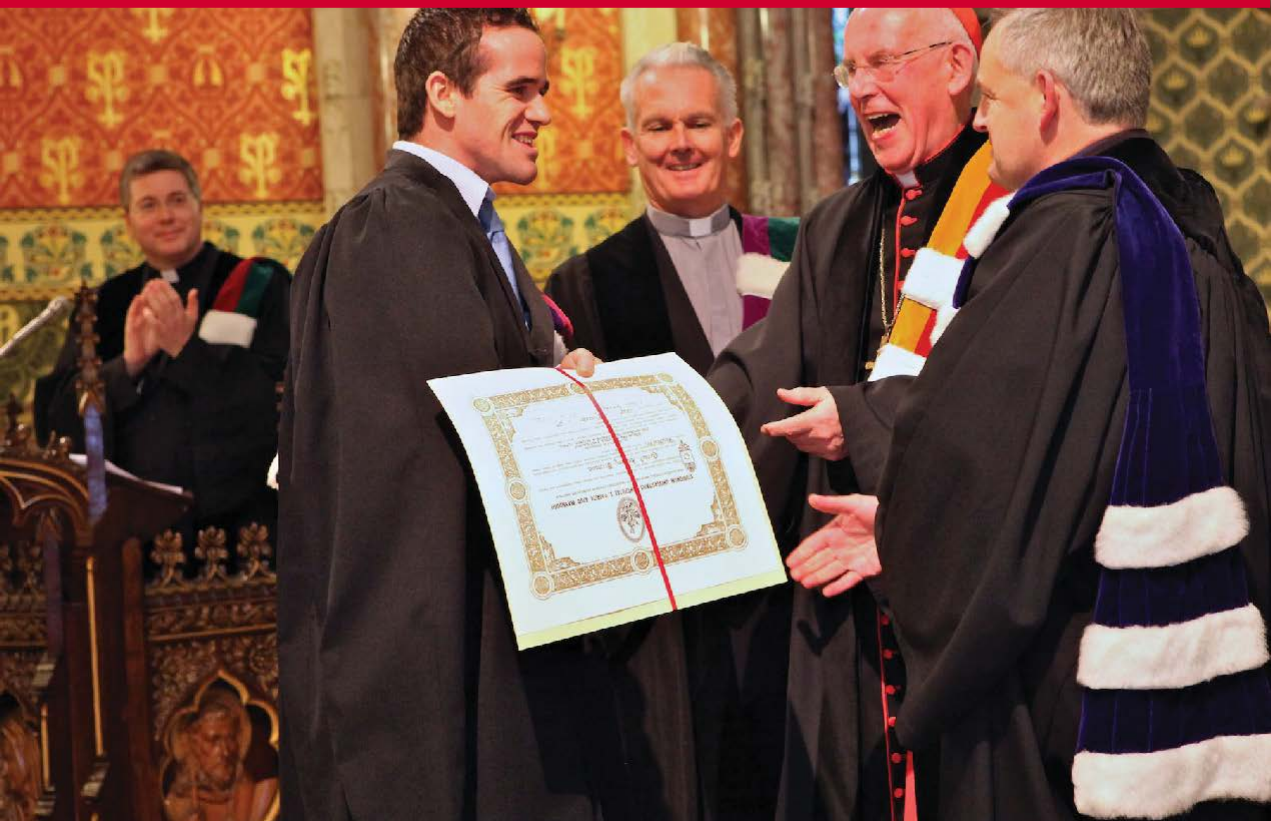
Tel: +353 (0) 1 708 3322

Fax: + 353 (0) 1 708 3523

Email: accommodation.office@nuim.ie

Web: www.maynoothuniversity.ie/accommodation

Student TESTIMONIALS



Paul O'Sullivan
Graduate, BATH

When I first drove into the student town of Maynooth for an open day, I immediately realised that this was somewhere that I could call home. Maynooth is a small town with a big heart, where no one will ever feel alone. My three year experience at St.

Patricks Pontifical University Maynooth and N.U.I Maynooth has been superb, so much so that I have decided that I am not yet ready to leave.

The greatest achievement of third level education is that it equips the student with the skills necessary to think for themselves. My experience of theology is that I have come to understand a lot about life itself, and the impact that religion, morality and history have had on life. Theology is not simply a religious education as one might expect when looking in from the outside, but facilitates the development of the person and our understanding of the world around us. It is a daunting experience progressing from second to third level education. It often involves leaving one's home, one's friends and everything that has become familiar, in favour of beginning a new life at University. However, it is a rite of passage that no one ever regrets. It is a time where you will make life-long friendships, discover who you truly are, and discover what you truly love about life.

Maynooth is a wonderful place to begin this life long journey of discovery. St. Patricks College is not only a beautiful place aesthetically, but internally it is home to a close knit community of staff and students, it is a place where everybody says hello, everybody knows each other and everybody looks out for one another. The staff are exceptionally professional and go far beyond what one would expect of them. Therefore students of "St. Pats" have the best of both worlds; a close knit community and a professional, academic panel of staff who are only delighted to guide you on a journey of learning and self-development that will change your life forever. If you choose Maynooth, I can say with confidence that when you leave a number of years later, the town, the University and the people will hold a special place in your heart that will remain with you forever.



Yvonne Myles
Graduate (BATH International)

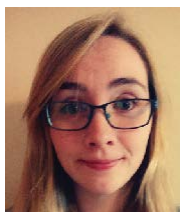
Making the decision to go on an Erasmus year was a difficult one for me. As a single mother with responsibilities I knew I was not the typical student to avail of this opportunity. However, opportunity was the

key word for me and I knew a chance to

study at one of the most prestigious colleges in Spain would not come my way again. Therefore, I made the decision to go and I brought my nine year old daughter Abby and our dog Toto.

Arriving in Madrid, we got the train to Salamanca and began the search for accommodation. One thing that was noticeable from the outset was the sheer beauty of the city. Also known as the city of gold, Salamanca resembled an old Roman film set. When I saw the Pontifica for the first time I was in awe at its beauty and felt so grateful at the chance to study there. Although I was initially worried by the lack of spoken English it was the best environment to improve my Spanish. The staff at the Pontifica were very welcoming and the Erasmus co-ordinators in Ireland and Salamanca were always at hand to help with any issues. There is a wonderful "Departamento de Idiomas para Extranjeros" where classes are held throughout the year. I would highly recommend these classes unless you have a very good level of Spanish. There is a fee, however, it is a reduced for Erasmus students. Credits from the language courses can be earned to go towards your total ECTS for the year. In second semester I focussed on Theology when my level of Spanish improved. Although it was still a huge challenge the teachers and students were very friendly and encouraging. My daughter and I took part in monthly trips organised by the college and were supported and included in everything.

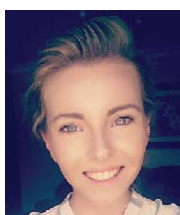
Going to Salamanca for my Erasmus year proved a challenge but it was one of the best years of my life. I would highly recommend that students avail themselves of the opportunity as not only will you broaden your Theological studies, you will also engage with a different culture and language. No doubt by the end of the year the people, the place and the experience will retain a special place in your heart that will last a lifetime.



Megan Byrne
Graduate, BATH

To sound somewhat cliché, putting St. Patrick's College Maynooth on my CAO was probably the best decision I have ever made. As I am about to embark on my final year here in St. Patrick's college I am filled with conflicting emotions, on one

hand I'm excited to see what opportunities will come my way after college and on the other hand I am saddened to think that I won't be returning to St. Patrick's every day. At this point in my time spent in college I have learnt things I didn't think possible, discovered things about myself that I didn't know existed and most importantly I have made friends who I know will stay with me long after I leave college. I walk into college every day smiling because I know I'm going to attend a lecture where I'm acknowledged, the lecturers know you as a person; not just a number. When people ask me what is it about theology that I like so much I just end up smiling and saying "everything", from the vast curriculum to the on-campus experience, There isn't one thing about studying Theology in St. Patrick's that I dislike. So yes, sound cliché, coming to St. Patrick's College Maynooth was the best decision I have ever made.



Mary Kate Thompson
Graduate, BATH

If I had to sum up my experience in St. Patrick's Pontifical University in one word, that word would be amazing. I never studied religion as an exam subject but once the woman came to my school to talk about the college I knew that it was

where I wanted to go. It was quite daunting as I didn't do religion as an exam subject but it was a fantastic experience that I wouldn't change! Moral theology was my favourite but I know quite a lot of my friends prefer scripture, so it is very versatile, we don't just sit there studying the bible! I would highly recommend doing Theology and Arts as it is very versatile and you have so much choice. It was tough but it was so worth it!

Probably the best thing about St. Pat's is the fact that theology is such a small group compared to MU so when you first come to the college, the first friends you make and the one's you will be best friends with, are doing theology. I commuted from Dundalk for my first year of college, so I didn't get the real college experience and it took me a lot longer to get to know people but within a few weeks I was making friends within theology and those became the friends I hung around with for three years, and lived with for my 2nd and 3rd years. The friends I made in theology I will definitely be keeping in touch with. As we are such a small group it meant that we are such a tight knit group and everyone gets to know each other so well over the 3 years. I will honestly miss it so much, the campus, the people, and even the lecturers! You get to know the lecturers really well because it is a small group so it's another advantage as it makes it easier to approach them if you have any questions. All in all my experience in St. Pat's was absolutely amazing! I've made lifelong friends, I've learned so much and you really know who you are as a person when you're in college. I promise you it would definitely be an experience you wouldn't regret if you decide to do this course, I wouldn't change my mind if I had the chance to do it again. It is challenging but it is most definitely worth it!



Stephen Friel
Graduate, BATH

I have just received my undergraduate degree in Theology and Business. This is something that I had wanted and worked hard to achieve while simultaneously not wanting to come to an end as the last three years have been the most interesting, exciting and influential years of my life. I wouldn't say that I have changed over my three years in SPCM but I have certainly grown and developed as a person and that is undoubtedly down to SPCM's offerings in terms of its lectures, its staff and its students. Having completed my degree, I am in

no doubt that I selected the right course for me, not just because of the subjects but because of the Maynooth experience.

During my time in SPCM, I was elected as St. Patrick's College representative in Maynooth Students' Union which was an honour. It was an experience from which I learned a lot, and also an example of the opportunities which SPCM in conjunction with Maynooth University provide to students and for students.



Stefano Zordan
Graduate

Coming from a small town in the Italian Alps, choosing to apply to Saint Patrick's College was certainly not something common or expected. My father's furious reaction to my decision of studying Theology well exemplifies how this

discipline appears obscure and even useless in the eyes of most of my compatriots. 'Are you going to become a priest?' was the question being posed to me most frequently. Every time it was for me incredibly challenging to have to explain the reasons behind my decision, also because (I must admit) such reasons were quite confused even in my own mind. I surely could not mention as a valid motivation the fact that, since the very first fortuitous time when I had come across a prospectus from Maynooth, I had been enchanted by the Neo-Gothic architecture of the campus. No rational student would choose a college for such a reason. I had thus to come up with something else. I was then always careful in reminding relatives and friends that I was not applying for a degree in pure Theology, but that I would have integrated it with much more spendable Arts.

Certainly this precisation did not convince my father...

Supported by a couple of long-sighted teachers, I remained firm in my choice and impatiently waited until that unforgettable morning of late August 2011, when the admission decisions were finally released. I had no ties whatsoever to Ireland; my new life there had to be built from scratch. And I will not hide the difficulties that this sometimes entailed, mostly on a personal level. I had come to study Theology with a very limited notion of what that would have really involved. My strong classical background, coupled with professors' and fellow classmates' capacity to make me feel at home, was enough to get me through the initial phase of disorientation. Starting with the second year, I got involved in a series of societies and projects on campus that proved to be an essential element to my integration into college life.

My third and final year in Maynooth was certainly the most rewarding and memorable. On the academic level, my choice of integrating Theology with Geography was making increasing sense in my own mind, and the first ideas about possible further study started to surface. On the extra-curricular plain, I was afforded the great privilege of being part of the committee of the Student Theological Society, where we put together a very high-level programme of events.

All these experiences contributed to form me not only as a student, but mainly as a person. And it was this aspect, I believe, even more than any academic excellences, which made it possible for me to be accepted by Harvard Divinity School to attend a Masters in Theological Studies. In such a plural environment such as HDS, the two qualities that are mostly appreciated are openness to diversity, and serious engagement with one's own religious tradition. My time in Maynooth fostered in me both these aspects. Grounded in the millennial living tradition of the Catholic Church, St Patrick's is surely the place where to critically explore and enrich one's faith; at the same time, its collaboration with Maynooth University, makes the college an incredibly diverse forum in which to dialogue with different perspectives. It is along these lines that I always understood the purpose of my degree and my time in Maynooth in general. And now I can say (and my father reluctantly has to agree) that it bore its fruits.

Application INFORMATION



APPLICATION DETAILS

Baccalaureate in Theology & Arts (B.A.Th.) CAO Code - MU001

Baccalaureate in Theology (B.Th.) CAO Code - MU002

Entry Requirements (Leaving Certificate) 2 x HC3 and 4 x O/HD3

Faculty Requirements (Leaving Certificate) English
Irish

a third language
+ 3 other recognised subjects

Entry Requirements (GCE/GCSE)

See page 7

Mature applicants welcome

Deferral available

Qualifies for Higher Education Grants

OPEN DAYS:

Autumn: 25th & 26th November 2016

Spring: 1st April 2017

Summer: 24th June 2017

How to Apply - Irish and EU applicants

Application is made through the Central Applications Office (CAO). Application literature is available from second-level schools or from CAO, Tower House, Eglinton Street, Galway.

Applicants may also apply online at: www.cao.ie

Contact: Use the "Contact Us" facility on the CAO website.

Tel. 00353 (0)91 509 800

Fax. 00353 (0)91 562 344.

An application fee is applicable when applying through the CAO.

Age Requirements

Students must normally have attained the age of seventeen years by 15th January following entry to the university. Where a candidate below that age seeks to enter the University, special application must be made to the University President, St Patrick's College, Maynooth.

Admission Requirements

Applicants under 23 years of age on 1st January of the year of proposed entry must meet matriculation requirements as follows:

- > Leaving Certificate or equivalent with a minimum of two recognised subjects at Higher Level Grade C3 and four at Ordinary or Higher Level Grade D3.
- > Passes in Irish, English and another language are required.
- > The subject Mathematics (Leaving Certificate Foundation level) will be accepted for matriculation purposes, but points will not be awarded for it.

> 25 bonus points will be added to the points score for Leaving Certificate Higher Level Mathematics grade HD3 or higher. The bonus points are included in the overall points calculation only when Mathematics is one of the applicant's best six subjects following the addition of the bonus. This was implemented in 2012 for a four-year pilot period which will then be reviewed.

> The subject Gaeilge – Bonnleibhéal (Irish – Foundation Level) will not be accepted for matriculation or points purposes.

LCVP

The following arrangements will apply to the Leaving Certificate Vocational Programme (LCVP) Link Modules:

> points will be awarded as follows: 70 points for a distinction, 50 points for a merit, and 30 points for a pass.

> applicants will have the opportunity to use their points allocation for the Link Modules as one of their six subjects for the purposes of calculating points.

> the Link Modules will not qualify as a subject for matriculation purposes.

Applicants who satisfy the above requirements are placed in order of merit on the basis of the common points system, and places are allocated according to the highest preference, in their application through CAO, to which their points entitle them.

□ Mature Applicants

Candidates 23 years of age or over on 1st January in the year of proposed entry who do not fulfil ordinary entry requirements may apply for matriculation on the basis of mature years. Applications must be made through the CAO by 1st February (www.cao.ie).

Late applications will be considered up to the late CAO closing date of 1st May. Please contact the Admissions Office before submitting a late application or before entering our courses on your CAO application using the Change of Mind Facility. An application fee is applicable when applying through the CAO. All mature applicants will be interviewed.

Tel: (01) 708 4772 Email: admissions@spcm.ie

□ A Level Applicants

You must apply through the Central Applications Office (CAO) if you are presenting A Levels.

As well as achieving the required points, you must have passes in six recognised subjects at GCSE (grade A, B or C) or AS Level (grades A-E) or A Level (grades A-E), including grade C or better in two subjects at A Level (AE or BD is seen as equivalent to two grade Cs for this purpose).

In all cases, applicants require at least GCSE grade C in English. In addition, you must have a pass in Irish and/or a third language at GCSE (minimum grade C), AS Level (minimum grade E) or A Level (minimum grade E). Some applicants may claim an exemption from Irish. For details contact:

The National University of Ireland, 49 Merrion Square, Dublin 2.
Tel: 01 4392424

www.nui.ie

□ Applicants from outside the Republic of Ireland

Applicants from outside the Republic of Ireland (26 counties) who have been granted exemption in the subject Irish, can meet the minimum entry requirements by passing English, Irish and four other subjects in the Matriculation exams, provided all other requirements have been met. This provision applies to candidates from Northern Ireland and candidates born outside Ireland who take Irish as a Leaving Certificate subject.

Points will be calculated on the basis of:

- > 4 subjects at A Level, or
- > 3 subjects at A Level, or
- > 3 subjects at A Level plus a different fourth subject at AS Level.

All subjects carry equal points except for Mathematics*. Points for A Level subjects must be obtained in one exam sitting. AS Level points must be for different subjects to those taken at A Level and may be carried over from a previous sitting. Minimum Entry Requirements and course requirements may be satisfied by an accumulation of subjects over more than one year. *An additional 25 points will be awarded for one Grade E or better in A2 Mathematics - this will apply to one Mathematics subject only and only if the subject is used for scoring purposes.

GCE LC POINTS EQUIVALENCE FROM 2010:

GRADE	A LEVEL	AS LEVEL
A*	150	-
A	135	65
B	120	60
C	100	50
D	75	35
E	40	2

GCE LC POINTS EQUIVALENCE PRIOR TO 2010:

GRADE	A LEVEL	AS LEVEL
A	145	65
B	120	60
C	100	50
D	75	35
F	40	20

□ FETAC

Holders of FETAC qualifications are welcome to apply to our programmes. Application is made through CAO. Applicants must have obtained a MAJOR award. Component Certificates will not

suffice. A major award may be accumulated over more than one academic year. In such cases, it is the responsibility of the applicant to apply to FETAC for a major award where courses are taken over more than one year.

A minimum of five distinctions are required for all courses. While a major award may be achieved over a number of sittings, the results that a student achieves in a single sitting (i.e. between 1st August - 31st July) are used for scoring purposes. The total maximum score that can be achieved is 400 points. The score is based on achievement of the major award, i.e. a total of 120 credits, multiplied by the grade score of individual components. Grade scores for component awards are as follows: 3.333 points for a distinction; 2.222 points for a merit; 1.111 point for a pass. As the number of FETAC places available will be limited, those places will be allocated on a competitive basis based on the student's score. Where more than one student has the same score, students will be ranked on a random basis by the CAO.

Entry to the first year of the BA in Theology & Arts programme, and the BA in Theology programme, will be considered for holders of one of the awards listed on our website: www.maynoothcollege.ie, and who have obtained at least 5 distinctions.

2 places will be available in MU001 Theology & Arts. 1 place will be available in MU002 Theology.

□ Occasional Applicants

Applications are welcomed from candidates who wish to study at the Pontifical University on an occasional basis. Occasional students may choose modules from our undergraduate degree programmes. The list of modules can be viewed in our kalendarium: <http://maynoothcollege.ie/pontifical-university/occasional-students-2/>

Application forms can be downloaded from our website or contact the Admissions Office.

□ International / Non-EU applicants

Applicants residing outside the EU must apply directly to the Admissions Office by 1st July. Download an application form from our website: <http://maynoothcollege.ie/pontifical-university/international-students-eu/> or email: admissions@spcm.ie

□ Entrance Scholarship

The 2016 Entrance Scholarship is automatically awarded and is available for students who have obtained the following in their Leaving Certificate (calculated from six subjects in one sitting):

1. Students achieving between 525 & 545 points receive an Entrance Award of €500 or
2. Students achieving 550 points or more are awarded €1,000.

For students presenting GCE A Levels the awards are based on achieving points from three/four subjects in GCE A levels.

The award is for one academic year following the student's admission to the University, payable in two instalments – one in November and one in February (subject to the student remaining in good standing with the University). Campus accommodation is not included. There is no need to apply for this scholarship - it is automatically awarded to incoming first year students who meet the requirements.

□ Convictions Policy

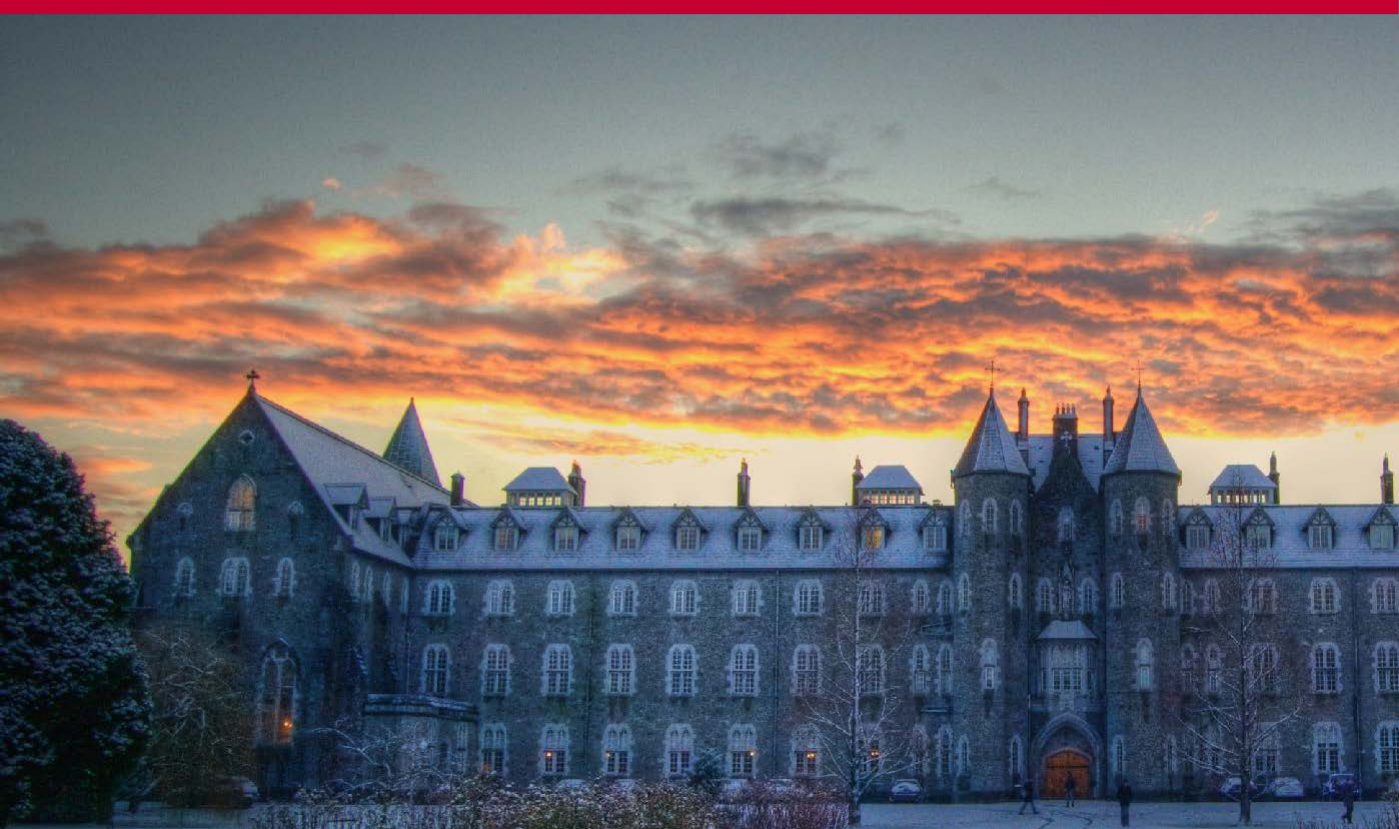
The Pontifical University, Maynooth actively promotes equality of opportunity and is keen to encourage a diverse student population with a wide range of talents, backgrounds and experiences. Having a criminal conviction will not necessarily prevent an applicant from gaining admission to the University. However, the University will take any relevant criminal convictions of a prospective applicant into account when considering applications for admission, and reserves the right to refuse to admit an applicant where his/her previous criminal conviction makes it inappropriate for him/her to be admitted.

■ Maynooth University - Kilkenny Campus

Theology is a subject offered in Maynooth University's Kilkenny Campus. Applicants apply for the First Year Bachelor of Arts programme in Kilkenny through the CAO: Code MH901. As well as Theology, the subjects on offer in Kilkenny include: Law, Philosophy, History, English, Anthropology, Economics, Sociology. Please consult Maynooth University's undergraduate prospectus for further details.

Baccalaureate in Theology (B.Th.)

HONOURS BACHELOR DEGREE – LEVEL 8 (HD)



2017 ENTRY CAO COURSE CODE: MU002

- > Baccalaureate in Theology (B.Th.)
- > It is an Honours Bachelor degree - level 8 (HD)
- > The programme extends over three years.
- > It is a full-time degree programme.
- > The Baccalaureate in Theology (B.Th.) is designed for students who wish to broaden and deepen their knowledge of the Christian faith by following a primary degree programme devoted to theological study.
- > The B.Th. is awarded by the Pontifical University of Maynooth.

Core Courses

Systematic Theology considers why Christians believe and what they believe in order to lead students to a deeper understanding of the basis and the content of the Christian faith.

Moral Theology is the study of morality as understood in the Christian tradition. Students will explore both foundational issues in morality (e.g. the nature and role of conscience) and specific issues that are of interest to contemporary society. The latter will include recent debates on bioethics, human rights and war.

Scripture examines the interpretation and significance of the Bible and studies the principal books of the Old and New Testaments.

Some of the topics explored over the three year programme include:

- > Christology and Redemption
- > Christian Faith and Contemporary Culture
- > Engaging Ethical Dilemmas / Human Rights
- > Philosophy of Religion
- > Religious Education in Secondary School
- > Introduction to Liturgy and Initiation
- > Philosophy
- > Theology of Creation and Grace
- > Canon Law
- > Ecumenical and Inter-Religious Dialogue
- > Prophetic Writings of the Old Testament
- > Wisdom Literature
- > Church History
- > Biblical and Theological Languages



WHAT IS THEOLOGY?

“Theology”, a word invented by the Greek philosophers, is based upon rational reflection on God, the world and human life. It covers a wide range of live issues from politics to business ethics to communications to issues such as truth and justice and unsurprisingly, some answers to the question of who or what God is. It attempts to express, in words, the elements of belief that are contained in faith. Like philosophy, theology is a valuable component of general education and the expertise gained in these disciplines is of value in many different career paths. Theology makes for an excellent discipline – combining research, critical analysis, independent learning and self-development.

Course Aims

The course aims to provide students with a solid intellectual formation in Theology. The scope of the course is wide, covering the range of the main theological subjects, so that students are introduced both to the breadth of the Catholic tradition and to the variety of questions raised for Theology at the present time.

A smaller number of issues are treated more intensively. Students of the course should develop a well informed understanding and a deep personal appropriation of the Christian faith.

Career Options

Some graduates of the BA in Theology enter into the teaching profession, both at second and third level. In terms of second level teaching, the BTh, followed by the Professional Master of Education (PME), fulfils the academic requirement of the Teaching Council for its admission of graduates to the Open or General Register of Teachers.

Some of our graduates have entered into the following careers:

- > Social Work
- > Religious Project Co-ordinator
- > Administration
- > Community Development
- > Public / Private Sectors
- > Pastoral Care
- > School Chaplaincy
- > Healthcare Chaplaincy
- > Third Level Chaplaincy
- > Research Administrator
- > Parish Administration
- > Librarian

Baccalaureate in Theology & Arts

HONOURS BACHELOR DEGREE – LEVEL 8 (HD)



2017 ENTRY CAO COURSE CODE: MU001

- > Baccalaureate in Theology & Arts (B.A.Th.)
- > It is an Honours Bachelor degree - Level 8 (HD)
- > The programme extends over three years
- > It is a full-time degree programme.
- > It is similar to a BA but is designed for students who wish to combine the study of Theology with the study of Arts.
- > Students take Theology in the Faculty of Theology in the Pontifical University; for the Arts component they follow the regular BA courses of the Faculties at Maynooth University.
- > First-year students take THREE subjects (60 credits in total): Theology (30 credits) plus two other Arts subjects (15 credits each).
- > Second and third year students take Theology (30 credits each year) and one Arts subject (30 credits each year).
- > The B.A.Th. is awarded by the Pontifical University, St Patrick's College, Maynooth.
- > Three years of study involves 180 credits, leading to a Double Major (equal study of two subjects) award.

☐ Theology Course Topics

Core courses in Theology include: Moral Theology, Systematic Theology and Scripture. Some of the topics explored over the three year programme include:

- > Christianity and World Religions
- > Christian Anthropology
- > Engaging Ethical Dilemmas
- > History of Christianity
- > Contemporary Issues in Bioethics
- > God and Suffering
- > Religious Education in Secondary School
- > Christian Sacraments
- > Ecumenical and Inter-Religious Dialogue
- > The God of Jesus Christ
- > Prophetic Writings of the Old Testament
- > Philosophy of Religion
- > Christian Faith and Contemporary Culture

☐ Arts Subject Combinations

FIRST YEAR:

Students choose Theology and two Arts subjects from the following groups. Any Arts subject combinations are permitted, as long as no two subjects are taken from the same group.

Students make their Arts subject choices on entry and may make changes in relation to the Arts subjects within the first four weeks of semester 1:

Group 1 Geography, German, Law, Philosophy, Mathematics (Pure)

Group 2 Business (Management), Business (Marketing), Business (International), Criminology, Greek, History, Statistics (in third year)

Group 3 English, International Development, Mathematical Studies

Group 4 Anthropology, Economics, Finance Latin, Nua-Ghaeilge

Group 5 Computer Science, Music, Sociology, Spanish

*Students taking Law as an Arts subject must achieve a minimum of 50% in the Law examinations in first year to progress into second year.

*Further details on individual Arts subjects are available from the Admissions Office, Maynooth University.

*A limit may be placed on the numbers taking a particular subject.



SECOND AND THIRD YEAR

Students take Theology and one from:

- > Anthropology
- > Business (Management)
- > Business (Marketing)
- > Computer Science
- > Economics
- > Music
- > Nua-Ghaeilge
- > Philosophy
- > Sociology
- > Spanish
- > Statistics (third year)
- > International Development
- > Latin
- > Law
- > Mathematics (Pure)
- > English
- > Finance
- > Geography
- > German
- > Greek
- > History
- > Criminology

Course Aims

THEOLOGY

The Theology course aims to provide students with a solid intellectual formation in Theology. The scope of the course is wide, covering the range of the main theological subjects, so that students are introduced both to the breadth of the Christian tradition and to the variety of questions raised for Theology at the present time. Students of the course should develop a well-informed understanding and a deep personal appropriation of the Christian faith.

ARTS

The Arts subjects offer students the opportunity both to broaden and deepen their knowledge of subjects they have already studied and to embark on new subjects of study. The variety of disciplines available is part of the richness of the Arts, but what all the subjects have in common is that each, in its different way, requires students to consider and reassess the values by which society operates in the modern world.

The Theology and Arts student therefore is someone with an enquiring and broad-ranging mind who will be well equipped to take his or her place in professional, social and community life.

Career Options

The Theology graduate is equipped to take an active role in the intellectual and pastoral life of the Church, while bringing a broader perspective to the civil position or profession which he/she is likely to take up. They are valued for their academic training, their ability to reason clearly and their capacity to take an overview of the problem or situation confronting them. Many, but by no means all, graduates of the BA in Theology and Arts enter the teaching profession. The BATH, followed by the Professional Master of Education (PME), fulfils the academic requirement of the Teaching Council for its admission of graduates to the Open or General Register of Teachers

Recent graduates of Theology & Arts have entered into careers involving the following:

- > Teaching
- > Business
- > Communications
- > Journalism
- > Finance
- > The Civil Service
- > Administration
- > R.E. Project Co-ordinator
- > School Chaplaincy
- > Third Level Chaplaincy
- > Marketing
- > Pastoral Work
- > Publishing
- > Public Relations
- > Social Services
- > Public / Private Sectors
- > Community Development
- > Research Administrator
- > Healthcare Chaplaincy
- > Parish Administration

Internal Transfers

After the close of the CAO season (mid-October) first year students registered on one of our undergraduate degree programmes may apply for an internal transfer. Applicants must:

- > complete an application form outlining the reason for the request.
- > meet the entry requirements for the course.
- > have the required points.

Application forms are available from the Admissions/Theology Office. There is no guarantee that a request for a transfer will be granted.

Additional Services AND TRANSPORTATION



REMEMBER

The following services are available to all students while attending college at Maynooth.

Please remember that these services are at your disposal throughout your time of study here, so students are encouraged to avail themselves of them.

Academic Advisory Office

The Academic Advisory Office functions as a convenient first point of contact for students who wish to seek advice or assistance with their general experience of University life. The office provides an ombudsman-like role for students who may be encountering difficulties in their programme of study.

The mission of the Academic Advisory Office is to provide high quality academic advice and guidance to enable all students to reach their full academic potential. Academic Advisors are here to help you to explore, identify and achieve your academic goals and to become an independent, self directed learner and decision maker.

The office is an open, welcoming and inclusive environment that nurtures and empowers all students through its programmes, services and initiatives.

Tel: (01) 708 3368 or via email: advisory.office@nuim.ie.

<http://academicadvisory.nuim.ie>

Career Development Centre

The Career Development Centre provides a service that is student focused, professional and informative offering information, advice and guidance on areas such as career options, further study and employment opportunities. We encourage you to make use of our resources throughout your time at university, and to begin working on your career plans early on.

We offer:

- > Career presentations
- > Drop-in Help-Desk daily
- > One-to-one guidance meetings with a careers adviser
- > Career Development Centre Website (www.maynoothuniversity.ie/careers) - useful resources including information on generating career options, getting into your chosen career, tips on job-search and interview techniques, job listings, sample CVs and on-line Careers Interest Tests.
- > Careers Information Room with FREE takeaway material.
- > Graduate recruitment/employer activities, including on-campus presentations and information stands.

For further information on the Career Development Centre, visit www.maynoothuniversity.ie/careers

Counselling Service

Professionally qualified Counsellors are available to assist students with problems which they may be experiencing during their academic career. These can range from personal and family problems to exam stress.

■ Mentoring Service

A voluntary mentoring service exists for first year students. It is a resource that is intended to facilitate the student's transition from second level to third level education. The mentor will provide advice and encouragement on one's overall approach to and organisation of one's first year studies.

■ Crèche

Maynooth University Crèche is a modern, purpose-built crèche in the heart of the north campus, located next to Rye Hall. We care for children aged 1 year to school going age. We are HSE registered with qualified staff. ECCE and CCS schemes available for qualifying parents. Tel: 01 7083319.

Parking Permits

Designated permit parking is now compulsory in the College. Permits may be purchased online. For more information consult our website:

www.maynoothcollege.ie

Chaplaincy

The Chaplaincy Service provides a range of religious and support services of all faiths and none. Chaplains and Ministers representing the Catholic, Church of Ireland, Methodist and Presbyterian Churches are available. There are also pastoral groups on campus such as the St Vincent de Paul Society, Maynooth Mission Outreach and Christian Union that welcome new members and offer a great opportunity for students to meet new friends and enjoy new experiences.

The Chaplaincy Service can be contacted at the Student Services Centre, Tel: 01 708 4729 / 3320

Website: www.maynoothuniversity.ie/chaplaincy

Transport

Maynooth, and the campus, are situated in Co. Kildare, 15 miles/25 km. west of Dublin city centre. There are frequent bus and rail services between Maynooth and Dublin and also between Maynooth and other towns and cities. The main Sligo – Dublin train line serves Maynooth.

Private Buses serving Maynooth for 2016-2017 academic year are listed as follows:

SUPPLIER	DESTINATION	TIME
Callinan Coaches Tel: 059 914 1619 Tel: 086 647 8277	Kilkenny Weekly Carlow	Weekly

Ardcavan Coaches Tel: 053 912 2561 www.ardcavan.com	Wexford Enniscorthy Bunclody Tullow Maynooth	Weekly
--	--	--------

Finlays Coaches Tel: 041-685 6505 www.finlaycoaches.com	Dundalk Drogheda Duleek Kilmoon Ashbourne Ratoath Maynooth	Weekly Daily Daily Daily Daily Daily
	SERVICE II Ardee Collon Slane Kilmoon Ashbourne Ratoath Maynooth	Daily

A2B Coaches Tel: 047 89831 Tel: 087 2779070	Monaghan Castleblaney Carrickmacross Ardee Collon Slane Maynooth	Weekly
--	--	--------

Slevins, Mullingar Tel: 044 937 2157 Tel: 044 937 2777 www.slevinscoaches.com	Dundrum Rathfarnham Templeogue Firhouse Tallaght Clondalkin Maynooth	Daily
---	--	-------

Streamline Coaches Tel: 049 433 0281 Tel: 086 818 2555 Tel: 086 818 1561 www.streamlinecoaches.ie	Cavan Virginia Kells Navan Dunshaughlin Dunboyne Maynooth	Daily
	SERVICE II Athboy Trim Summerhill Maynooth	

James Mullally Tel: 086 380 8766	Lucan Celbridge Maynooth	Daily
--	--------------------------------	-------

Laois Offaly Local Link Tel: 057 892 168 www.locallink.ie	Daingean Croghan Rhode Edenderry Carbury Cross Johnstownbridge Maynooth	Daily
--	--	-------

SUPPLIER	DESTINATION	TIME
Offaly & Kildare Community Transport (OK Transport) Tel: 045 528 124 Tel: 045 528 126 www.oktransport.com	SERVICE I Daingean Croghan Rhode Edenderry Carbury Johnstownbridge Maynooth	Daily

	SERVICE II Allenwood Robertstown Blackwood Prosperous Rathcoffey Maynooth	
	SERVICE III Clonbolloge Bracknagh Rathangan Lullymore Maynooth	

Kearns' Transport Tel: 0579120124 Tel: 0579122244 Tel: 086 898 1748 www.kearnstransport.com	Kilcormack Tullamore Kilbeggan Tyrrellspass Rochfortbridge Milltownpass Kinnefad Clonard Enfield Kilcock Maynooth	Daily
--	---	-------

SUPPLIER	DESTINATION	TIME
JJ Kavanagh Tel: 056 883 1106 Tel: 0818 333 222 www.jjkavanagh.ie	Carlow Athy Kilmead Ballytore Kilcullen Newbridge Naas Sallins Clane Kilcock Maynooth Portlaoise Mountmellick Portarlington Monasterevin Kildare Newbridge Naas Sallins Clane Kilcock Maynooth Birr	Daily

OTHER SERVICES:	Carlow Kilkenny Waterford Limerick Nenagh Roscrea	Daily
------------------------	--	-------

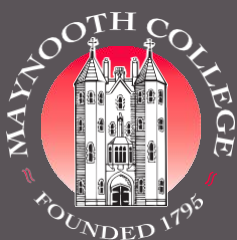
Information correct going to print. Please contact relevant bus companies for further details or telephone the Students' Union in Maynooth on (01) 708 3669

Location



DISCLAIMER

The information contained in this publication is intended as a guide for those seeking admission to the Pontifical University, Maynooth and does not constitute a contract or any terms thereof between the university and any intending applicant or any third party. Neither is it intended to give rise to legal obligations of any kind on the part of the university or its employees. The university reserves the right at any time, or from time to time, to cancel, revise, amend, or alter programmes of study and academic regulations. The university is not responsible for and shall not be bound by any errors in, or omissions from this publication.



Admissions Office,
Pontifical University,
St Patrick's College, Maynooth,
Co. Kildare, Ireland.

Tel: 00353 (0)1 705 4172
Fax: 00353 (0)1 705 3444
E-mail: admissions@spcm.ie
Web: www.maynoothcollege.ie

